



Reduction Claim

Sediments	✓
Chlorine	✓
Pesticides & Herbicides	✓
Flammable Liquids (VOCs)	✓
Taste, Odours & Colour	✓
Heavy Metals (Copper, Arsenic, Mercury, Lead...)	✓
Parasites	✓
Bacteria	✗
Viruses	✗
Fluorides	✗
Chloramines	✗

Replacement Filters Bundle

Filter Cartridges are recommended to be replaced every year. However, replacement frequency depends on water quality and usage.

- Every Year
- Every 18 Months
- Every Two Years

CHOICE OF FILTERS



Triple Undersink System w/ Sediment, Carbon and Carbon

\$435



Triple Undersink System w/ Sediment, Fluoride and Carbon

\$485



Triple Undersink w/ Sediment, Fluoride and Aragon

\$545

\$144

\$184

\$224

SPECIFICATIONS

Flow Rate: 3 LPM
Connects To: 1/2" Cold Water Line
Operating Temperature: 5-35°C
Dimensions:
390 W x 370 H x 130 D mm

If height is an issue, the system can go laying down. This position won't affect its performance.

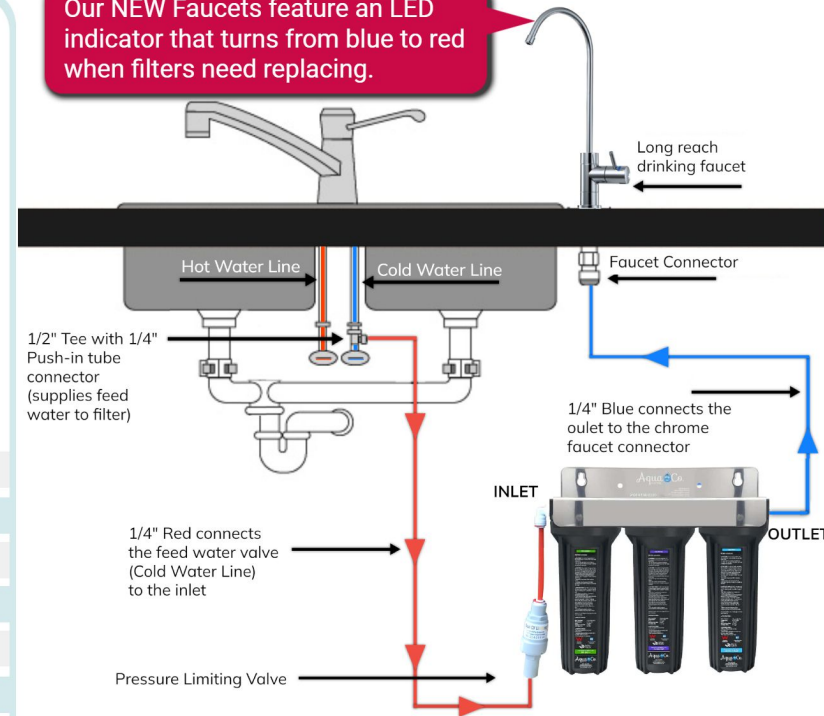


WaterMark

Certificate No.: 23448
AS/NZS 3497:1998

5 YEARS WARRANTY

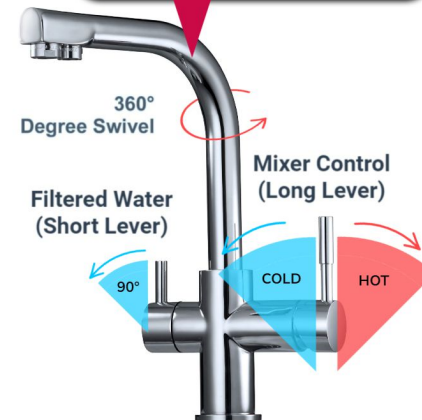
Our NEW Faucets feature an LED indicator that turns from blue to red when filters need replacing.



Components are Tested and Certified by NSF International under NSF/ANSI Standard 42 for material requirements only.

If you do not want a separate drinking faucet, you can upgrade your kitchen faucet and get a 3 Way Chrome Mixer Tap for \$345*.

Unlike an RO system, these systems will NOT reduce Total Dissolved Solids (TDS), or Calcium Hardness. If you are interested in a filter that removes TDS or hardness, consider our Reverse Osmosis (RO) systems.



UPGRADE TO 3 WAY TAP

to avoid drilling a hole through your stone/wood bench.



In 3 Way Mixers, filtered water has an independent nozzle in the spout. Therefore, filtered and unfiltered water never mix.

High Loop 3 Way Mixers Spout

L-Shape 3 Way Mixers Spout



- SS High Loop -
400mm H x 225mm W

- High Loop -
370mm H x 190mm W

L-Shape -
325mm H x 195mm W



\$395

Stainless Steel

\$395

Matt Black

\$345

Chrome

\$345

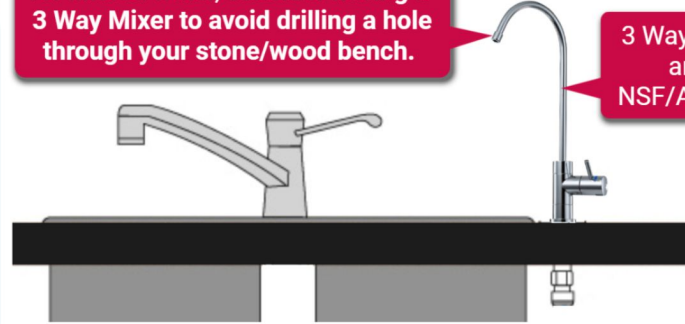
Chrome

\$395

Matt Black

Our NEW Chrome 3 Way Mixers feature an LED indicator that turns from blue to red when the filter needs replacing.

Instead of having a separate faucet for filtered water, consider having a 3 Way Mixer to avoid drilling a hole through your stone/wood bench.

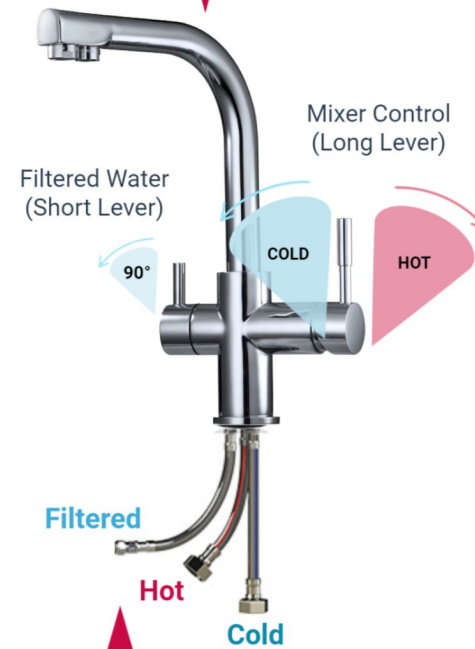


3 Way Mixers and Taps are Certified to NSF/ANSI 61 Section 9.



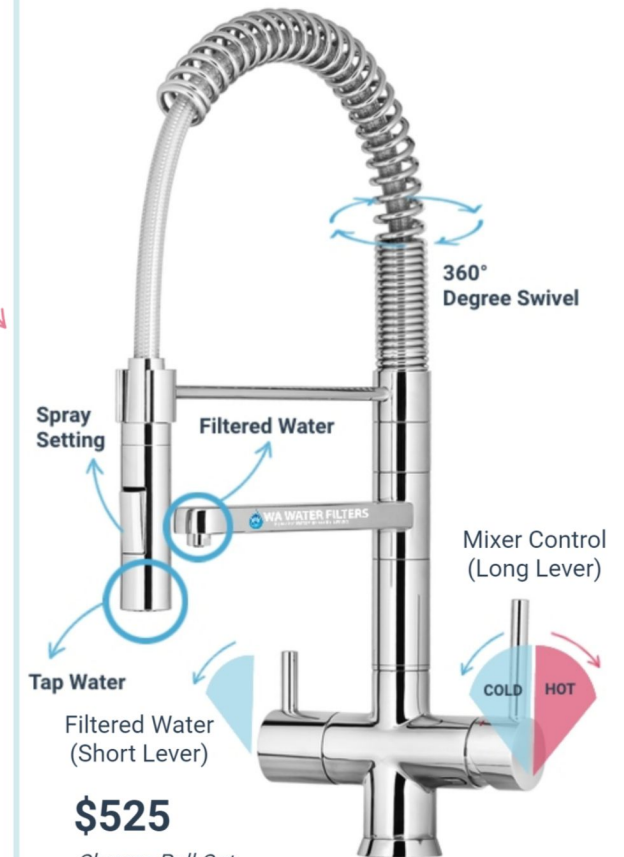
5 YEARS WARRANTY

3 Way Mixers have a long lever for hot and cold, and a short lever for only filtered water.



In 3 Way Mixers there are separate tubes inside the faucet, so there's absolutely no mixing of sources.

PULL OUT HOSE MIXER



\$525

-Chrome Pull Out -
478mm H x 333mm W



Polypropylene Sediment Cartridges

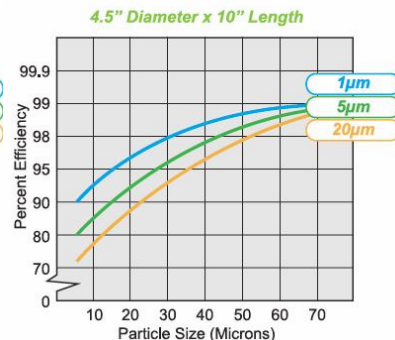
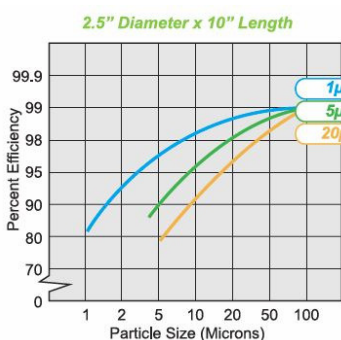
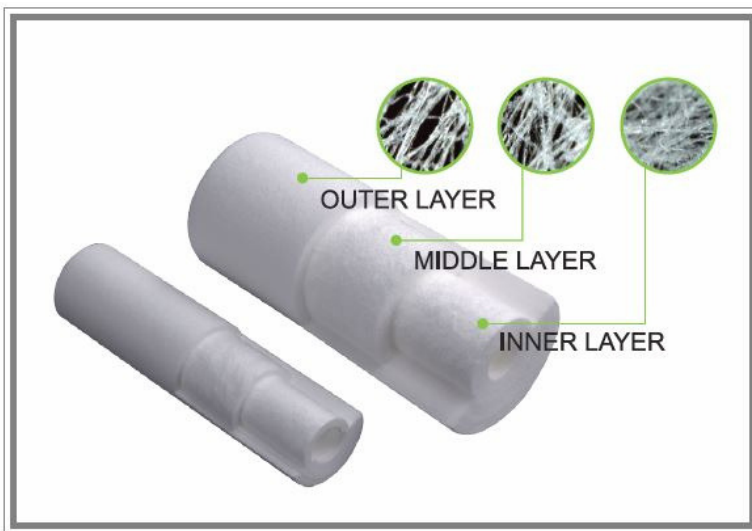
Sediment filters are used as a primary filter to help to remove dirt, rust and sediment deposits, from water to help prevent or slow down the blockage of the secondary carbon filter.

Sediment filters range from less than 1 micron to about 70 microns but the most typically used are 5, 10, 20, 25, 30, 50. They would typically be used in a sequence with the biggest "pore" size or micron size being the first one the water goes through and the smallest the last.

AWC recommends sediment filter made from Polypropylene which is resistant to the growth of bacteria. They typically come in four sizes which are 9", 10" and 20" tall and 2.5" and 4.5" radius. They are typically referred to as either Slim Line or Big Blue.

Features & Benefits

- Three-layers structure cartridge, high contaminant holding capacity, long filter service life.
- 100%PP for compatibility with a wide range of process fluids.
- Micro-Denier melt-blown fiber, high removal ratings.
- Formed by thermal bond without use of any binders and adhesives
- Certificated by NSF42 and FDA CFR Title 21.



Model No.	FPP-LL-WX-ZZZ
Micron Rating	1,3,5,10,25,50,75,100 Micron
Material of Construction	100% melt-blown micron-denier PP fibre
Length	9", 10", 20", 30", 40" (251mm, 254mm, 508mm, 762mm, 1016mm)
Inner Diameter	28mm
Outer Diameter	2.5", 4.5" (63mm, 110mm)



Activated Carbon Block Filter Cartridges

Activated carbon filters are particularly effective at removing pollutants which create unpleasant taste, colour, and odour in water. These fast-acting filters can eliminate or reduce the levels of chlorine by-products, pesticides, herbicides, and other organic and industrial chemicals.

There are two forms of carbon in general use: granular and block. A Granular Carbon filter contains Carbon granules of carbon about the size of coarse sand while carbon block consists of finely powdered carbon compressed into a solid mass. Typically carbon filters are 5 micron but can be different.

To get the best use from any carbon filter, it should be kept free of sediment and heavy organic impurities if these are present in your water. Typically an inexpensive sediment filter used as a "pre filter" would be installed prior to the carbon unit to extend the life of the more expensive carbon cartridge.

Be aware that there are many cheap carbon filters on the market that originate from Asian countries where the carbon has been sourced from coal rather than coconut which give off dangerous carcinogens.

AWC only uses quality carbon sourced from activated coconut shell that has been washed numerous times.

Features & Benefits

- Quality assured carbon block cartridges
- No carbon fines and superior contaminant capacity.
- Enhanced dirt holding capacity for extended cartridge life.
- Reduces chlorine, bad taste and odour.
- Formed by thermal bond without use of any binders and adhesives
- Certificated by NSF42 and FDA CFR Title 21.



Filtration Process



Carbon Block Filter Absorption

Key Specs include a 5 µm micron rating & removal of Chlorine, organochemicals, unnatural tastes and odours found in TAP water.

Structure of the Carbon Block Filter

The Carbon Filters are made of fine **COCONUT SHELL** carbon that offers a much finer filtration of suspended particles, chemicals, & dirt.

